



# LED VG25-2000e

Part #: EBVG25DM/B/7W/800/360D/27K/E26/E Lamp Class: G25



## Product Description

**LED VG25-2000e** delivers superior brightness, valuable energy savings and long lasting performance. LED Filaments along with heat-sink absence unmistakably mimic traditional bulb styles while providing greater light distribution. This G25 Class LED bulb comes in 2700K CCT (*Warm White*) for charming and hospitable environments. Enjoy features such as: instant on, dimming options, full beam spread and mercury free.



**Estimated Energy Cost: \$0.84 per year**

\*Note: Design, features and specifications subject to change without notice. Some features may not be available on all models. Please visit [www.eurilighting.com](http://www.eurilighting.com) or call 1-888-743-5766 for more information.

## Technical Specifications

Body Type	CCT	Input Power	Input Voltage	Lumen Output	Beam Angle	Center Beam	CRI	Luminous Efficacy	Power Factor	Input Current	Base	Lamp Lifespan
Clear Glass	2700 K	7 W	120 V	800 lm	360°	59 cd	80	114 lm/W	0.9	0.06 A	E26	15,000 Hrs.

### Product Features & Benefits



Dimmable



Instant-On/Off



Mercury Free

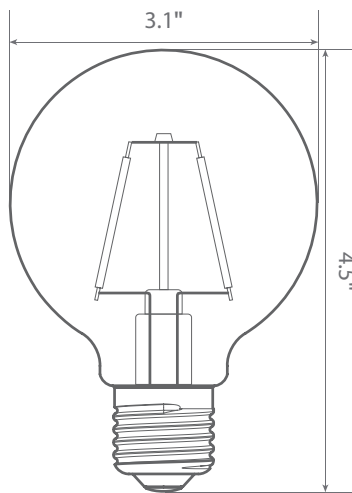


Damp Rated

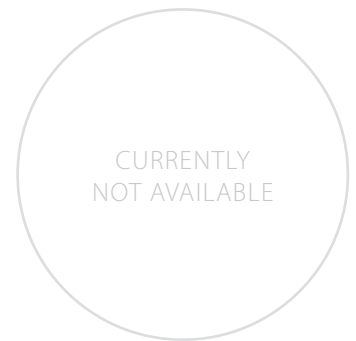


Full Beam Spread

### Product Dimensions



### Product Photometric Data



**Euri Lighting | A Division of ITRONIX Inc.**

20900 Normandie Avenue Bldg. B, Torrance, CA 90502 | Tel: 888.743.5766 | Fax: 310.787.1166 | [www.eurilighting.com](http://www.eurilighting.com)  
©2017 Euri Lighting. All Rights Reserved