

# LED EA21-1020et

Part #: EBA21/B/16W/1600/230D/27K/E26/E Fixture Class: A21



## Product Description

**LED EA21-1020et**, omni-directional A21, replaces conventional 100 Watt incandescent bulbs delivering more brightness (lumens) for less energy (Watts), with lower energy consumption levels you will be able to experience considerable energy savings throughout the years. **EA21-1020et** design reduces internal bulb heat providing greater durability when compared to incandescent bulbs and energy saving lamps. Enjoy features such as instant on, shatter resistance and mercury free.



**Estimated Energy Cost: \$1.92 per year**

\*Note: Design, features and specifications subject to change without notice. Some features may not be available on all models. Please visit [www.eurilighting.com](http://www.eurilighting.com) or call 1-888-743-5766 for more information.

## Specifications

Input Power	Input Voltage	Lumen Output	Beam Angle	Center Beam	CCT
16 W	120 V	1600 lm	230°	N/A	2700 K

CRI	Luminous Efficacy	Power Factor	Input Current	Base	Lamp Lifespan
80	100 lm/W	0.8	0.1 A	E26	15,000 Hrs.

Phases	Input Power	Equivalency	Lumen Output	Luminous Efficacy	Equivalency	Estimated Yearly Cost
Phase 1	5 W	40 W	450 lm	90 lm/W	40 W	\$ 0.60
Phase 2	9 W	60 W	800 lm	88 lm/W	60 W	\$ 1.08
Phase 3	16 W	100 W	1600 lm	100 lm/W	100 W	\$ 1.92

### Product Features



Non-Dimmable



Instant-On/Off

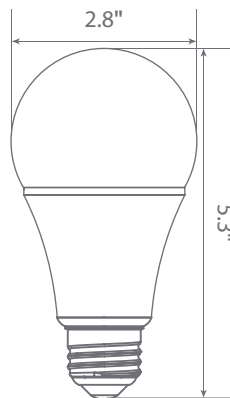


Mercury Free

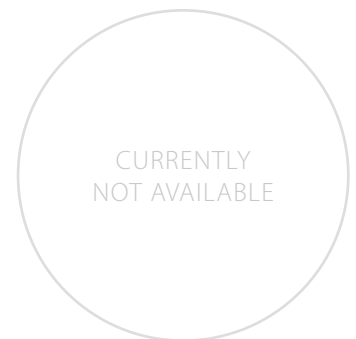


Damp Rated

### Product Dimensions



### Product Photometric Data



**Euri Lighting** | A Division of **IRTRONIX** Inc.